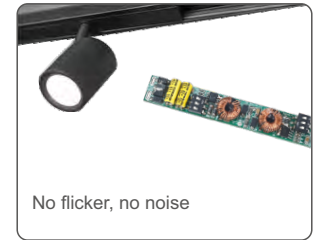


# CXR-21A-2(WZS),CXR-28A-2(WZS)

Zigbee 3.0

## Zigbee 3.0 Constant Current CCT LED Driver

- Special for magnetic & linear lamp
- No input polarity
- DC to DC constant current output, multiple output current settings
- Tuya APP cloud control, support color temp and brightness adjust, delay turn on/off, timer run, scene edit, sleep wake-up and biorhythms function
- Philips HUE APP control by connect with Philips HUE bridge
- Voice control, support for Amazon Alexa, Google Assistant, Tmall Genie and Xiaodu smart speaker
- Can relay and route to each other, up to 15 hops
- Match with Zigbee 3.0 remote or scene panel control optional
- Suitable for STUCCHI standard housings, magnetic installation
- Smooth dimming without flicker, quiet without noise
- Short circuit, overload, no-load and anti-reverse protection
- 5-year warranty



### Technical Parameters

Model		CXR-21A-2(WZS)	CXR-28A-2(WZS)
Output	Output Voltage	10~42VDC	
	Output Current	2x(150-500)mA	2x(350-700)mA
	Output Power	1.5W-21W	3.5W-29.4W
	Current Accuracy	±5%	
	Dimming Range	0~100%	
	Channel num	2	
Input	Dimming Interface	Zigbee 3.0	
	Input Voltage	48Vdc±5% (No polarity)	
	Input Current	Max.0.47A	Max.0.65A
	Efficiency (Typ)	93%	95%
	Standby Power	<0.5W	
Environment	Working Temperature	-20~50°C	
	Storage Temp	-40~80°C	
	Working Humidity	20~95%RH, non-condensing	
Protection	Overload	Hiccup,recovers automatically after fault condition is removed.	
	Short Circuit	Hiccup,recovers automatically after fault condition is removed.	
	Input Anti-Reverse Protection	No input polarity	
Other	Size	L117xW13.5xH12.2mm	
	Weight	13.1g±2g	

### LED Current Selection

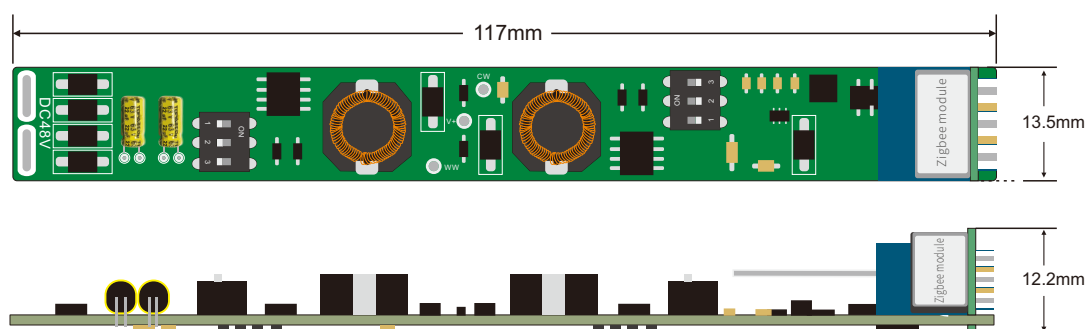
Note: Please select the correct current through the DIP switch on the PCB board when the power is off.



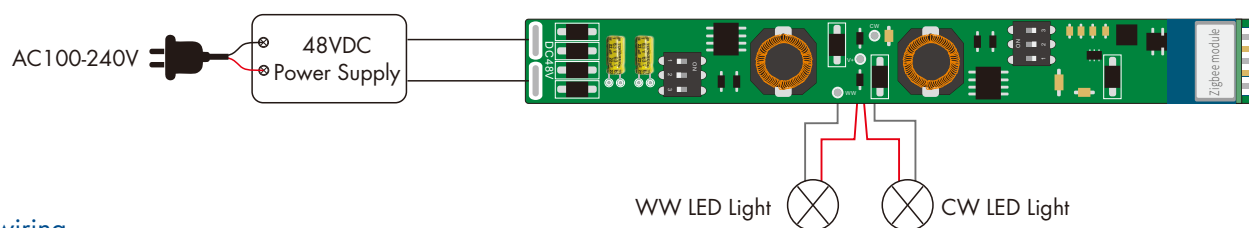
DIP Switch												
CXR-21A-2(WZS)	Output Current	150mA	200mA	250mA	300mA	350mA	400mA	450mA	500mA			
	Output Voltage	10-42V	10-42V	10-42V	10-42V	10-42V	10-42V	10-42V	10-42V		ON	OFF
	Output Power	1.5-6.3W	2-8.4W	2.5-10.5W	3-12.6W	3.5-14.7W	4-16.8W	4.5-18.9W	5-21W			

DIP Switch												
CXR-28A-2(WZS)	Output Current	350mA	400mA	450mA	500mA	550mA	600mA	650mA	700mA			
	Output Voltage	10-42V	10-42V	10-42V	10-42V	10-42V	10-42V	10-42V	10-42V		ON	OFF
	Output Power	3.5-14.7W	4-16.8W	4.5-18.9W	5-21W	5.5-23.1W	6-25.2W	6.5-27.3W	7-29.4W			

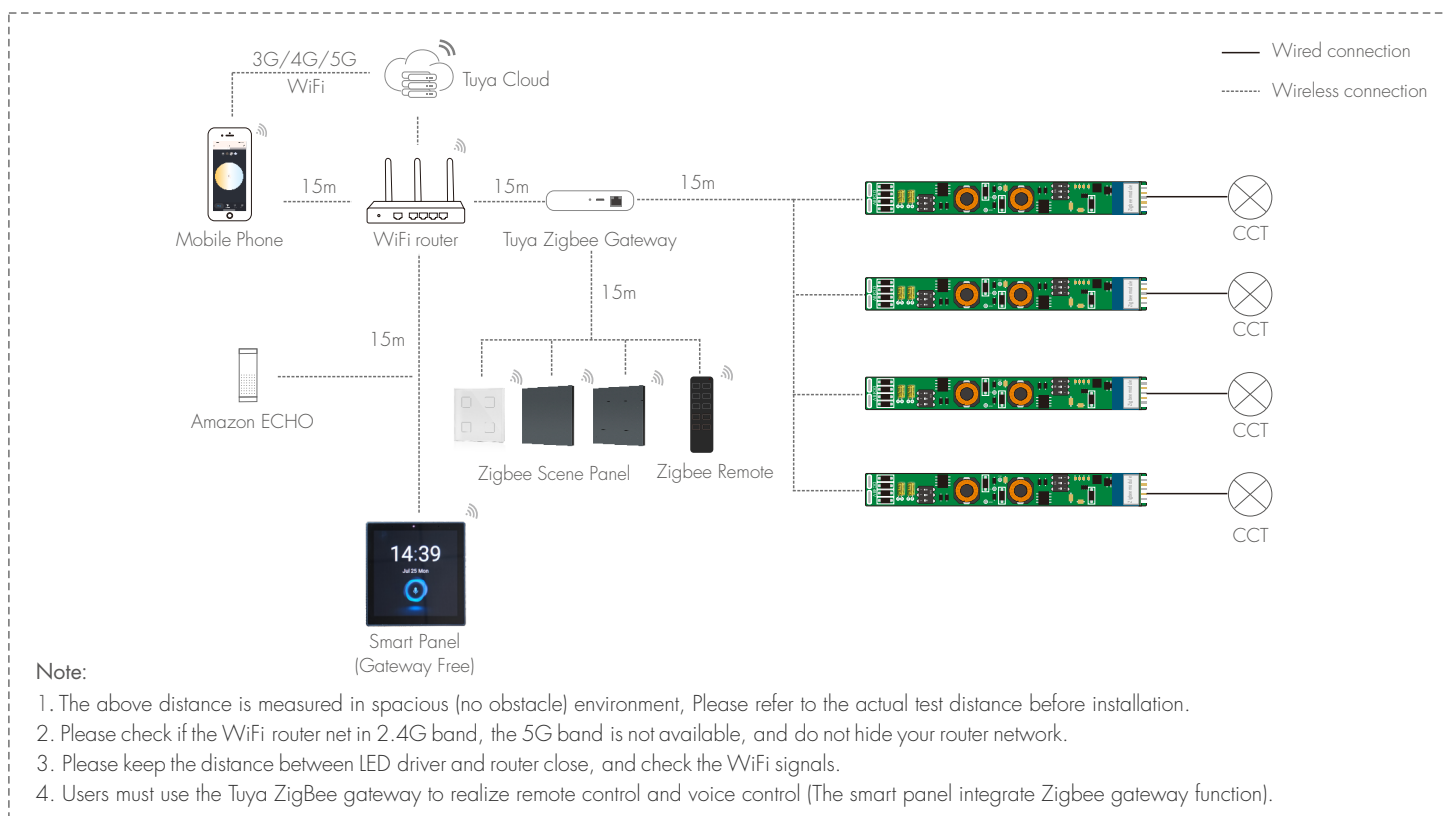
### Mechanical Structures and Installations



## Wiring Diagram



## System wiring



## APP Operating Instructions

### 1. Network pairing

- Download the Tuya APP and register an account, search and add the Tuya Zigbee gateway device.
- Quickly repeat power on and off five times to clear the previous network connection, enter pairing mode with the output light breathes blinking.
- Under the gateway, search and add new device. If the network connection is successful, you can find ZBS-CCT devices in Tuya APP.

### 2. Lighting control settings

After pairing the light device, click the device and change brightness and color temperature by touch brightness slide and color wheel.

In "Scene", there are 4 scene can be recalled or customized.

In "Setting", there are Plan, Schedule, Timer, Rhythms, Power-on behavior functions.

