

2.4GHz Wireless Dimming (3-Zone)

Model No.: PUSH1-3

Features

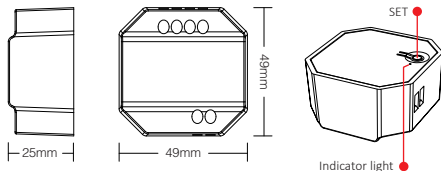
- AC100-240V powered
- No wiring, easy to realize wireless dimming of PUSH switch
- Compatible with MiBoxer / Mi-Light 2.4G series lamps
- Adopt 2.4G RF wireless transmission technology, control distance 30 meters
- Supports 3 sets of independent control, unlimited number of lamps
- Supports 4096 levels of smooth dimming, with a minimum brightness of 0.1%
- Dimming range 0.1%-100%



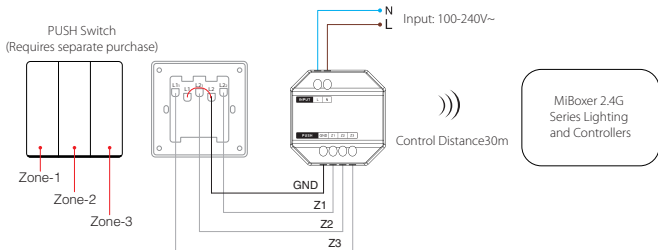
Product Parameters

Product Name:	2.4GHz Wireless Dimming (3-Zone)
Model No.:	PUSH1-3
Input Voltage:	AC100-240V 50/60Hz
Transmitting Power:	6dBm
RF:	2.4GHz
Control Distance:	30m
IP Rating:	IP20
Working Temperature:	-10~40°C
Standby Power Consumption:	0.15W

Dimming Grayscale:	4096 Levels
Dimming Range:	0.1%-100%
EMC Standard (EMC):	ETSI EN 301 489-1 V2.2.3 ETSI EN 301 489-3 V2.1.1
Safety Standard (LVD):	EN 61347-1: 2015+A1:2018 EN 61347-2-11: 2001+A1:2019
Radio Equipment (RED):	ETSI EN 300 440 V2.2.1
Certification::	CE, EMC, LVD, RED

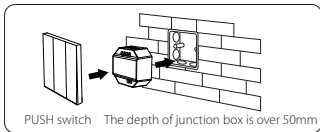
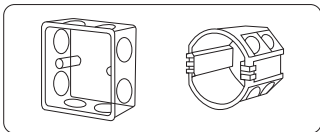


Connection Diagram

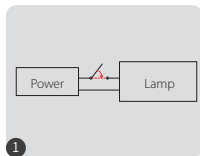


Installation Diagram

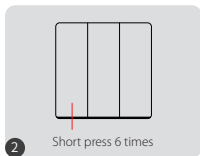
Support following standing junction box



Linking Code Instructions



Power off, then power on again after 10 seconds



Short press the "PUSH" 6 times within 3 seconds

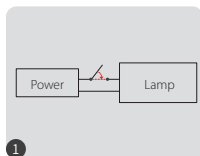


The lamp flashes slowly 3 times, indicating successful linking

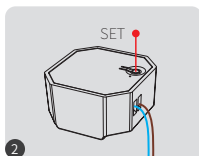


If the lamp does not flash slowly, the code binding failed, please re-perform the above steps.
(Note: Already coded lamps cannot be coded again).

Unlinking Code Instructions



Power off, then power on again after 10 seconds



Short press the "SET" 5 times within 3 seconds



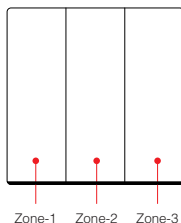
The lamp flashes quickly 10 times, indicating successful unlinking



If the light does not flash quickly, the code clearing failed, please perform the above steps again.
(Note: Already coded lamps cannot be coded again)。

Dimming control

- Supports 3 sets of independent control, unlimited number of lamps
- Short press to turn on/off the light, long press to adjust the light brightness.



Notice

1. Please do not use it in a humid or high temperature environment for a long time. When not in use for a long time, please remove the battery and store it in a dry, static-free environment.
2. Do not use it in an environment with a large area of metal or near strong electromagnetic waves, otherwise the control distance will be seriously affected.



Made in China