

Product Specification



Name: Multi-function Touch Panel Controller
Model: WallDim200

- 0-10V Dimmer mode
- Supply voltage: AC90-265V
- Output voltage: DC0-10V
- Output current: 50mA

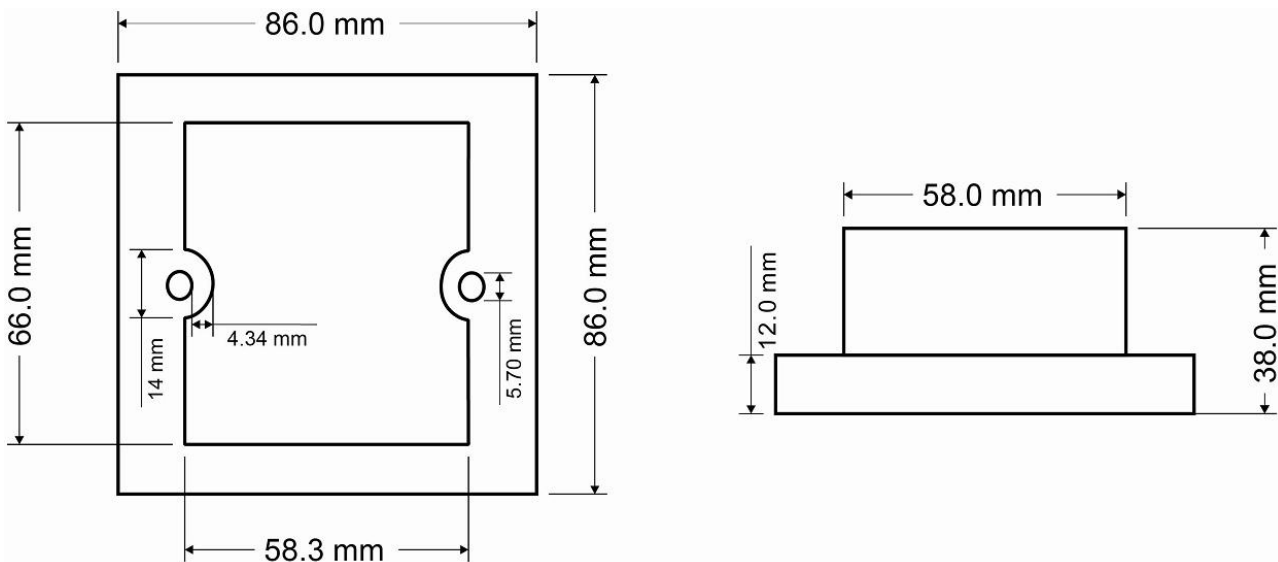
1 Summarization

WallDim200 is one of our high-end, multi-function WallDim touch panel controller series, with characteristics of fashionable and beautiful appearance, complete functions, easy operations, sensitive key touch, 0-10V signal control and various forms. It is mainly used to connect LED 0-10V DIM controller. It can realize 0-10V smooth dimming according to different requirements.

2 Technical Parameters

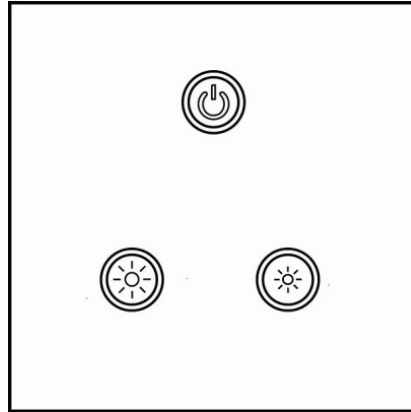
Supply voltage	AC90 -265V
Output voltage	DC0 -10V
Output current	50mA
Static power	<1W
Output channel	1 channel
Product dimension	L86 X W86 X H38 mm
Packing size	L117 X W117X H48 mm
Working temperature	-20-60 °C
Net weight	136g
Gross weight	194g




3 Dimension



4 Function Description

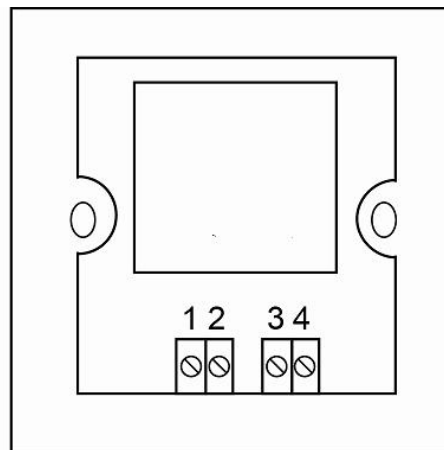
Appearance



-  Short press can control Power ON and OFF
-  Increase dimmer brightness: add one grade from 0 -10V by each press
-  Reduce dimmer brightness: reduce one grade from 0-10V by each press

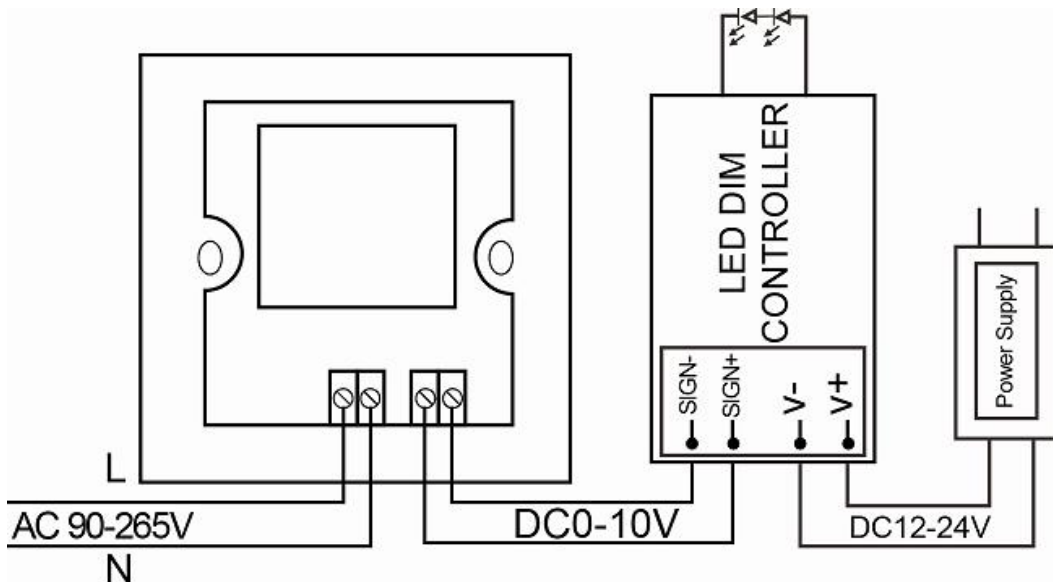
5 Interface Introduction

1. INPUT: L
2. INPUT: N
3. OUTPUT: 10V
4. OUTPUT: 0V



- ◆ Power input interface
AC 90-265V input, supply power for the controller it takes.
- ◆ Signal output interface
DC0-10V output can control LED 0-10V DIM controller.

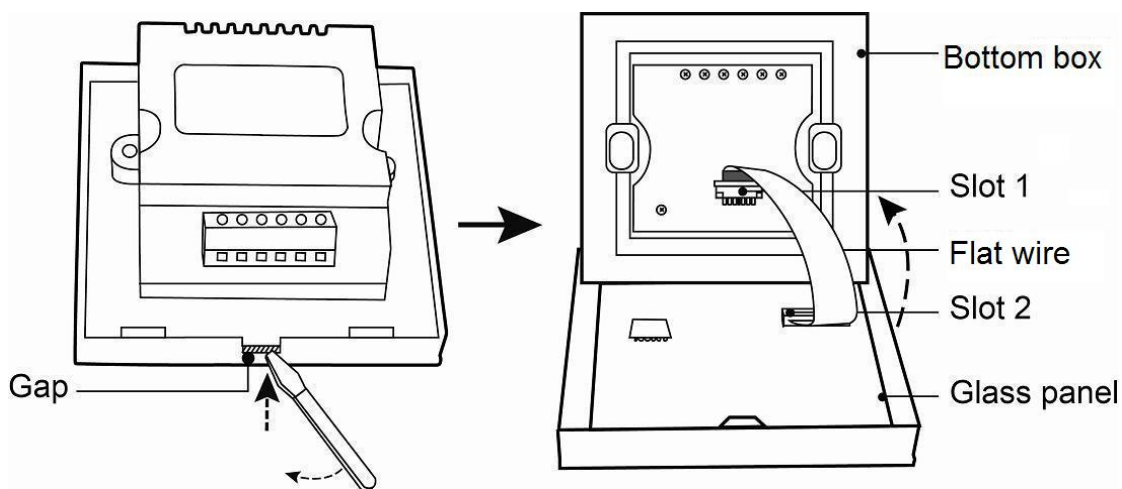
6 Typical Application



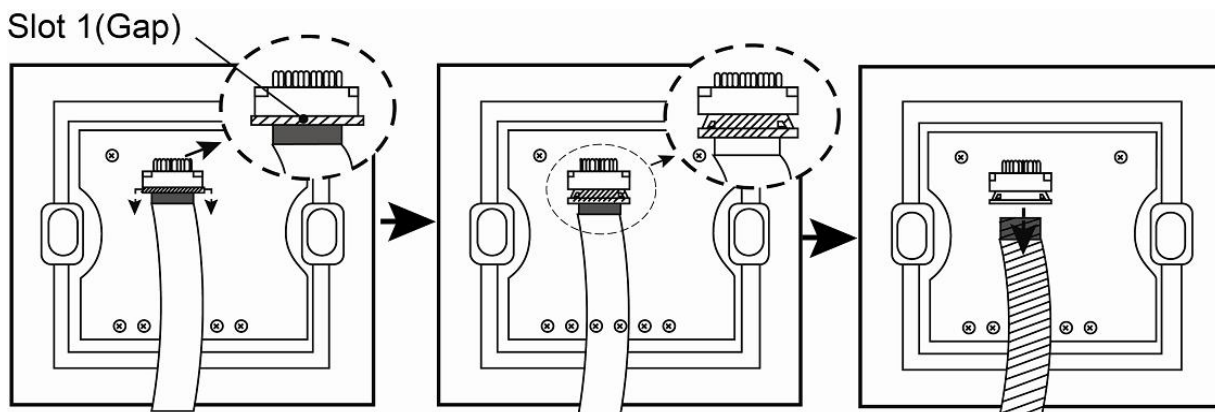
7 Installation Guide

1. To separate the glass panel and the bottom box of the controller with a screwdriver along the gap of the bottom box.

Notice: the flat wire connect between the glass panel and the bottom box, please be careful.

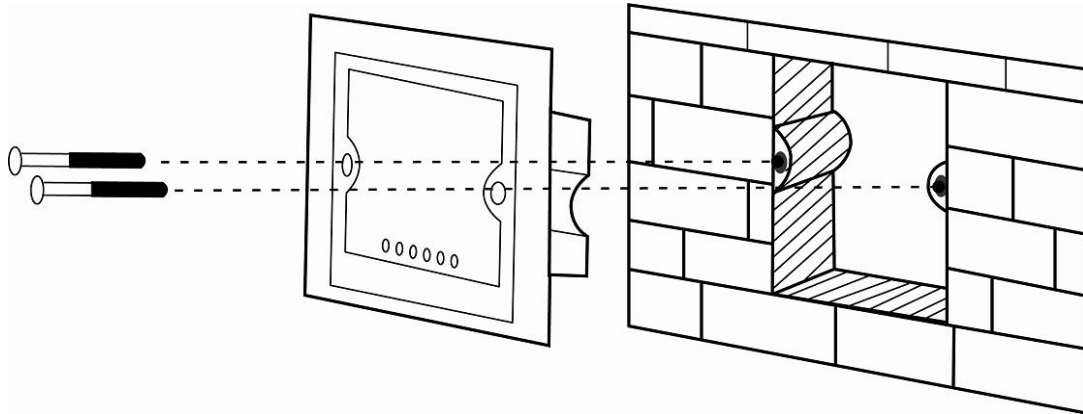


2. To gently and parallel pull out the card buckle on slot NO.1 with fingers (about 1.5mm), until flat wire loosen and can be pulled out from the slot.

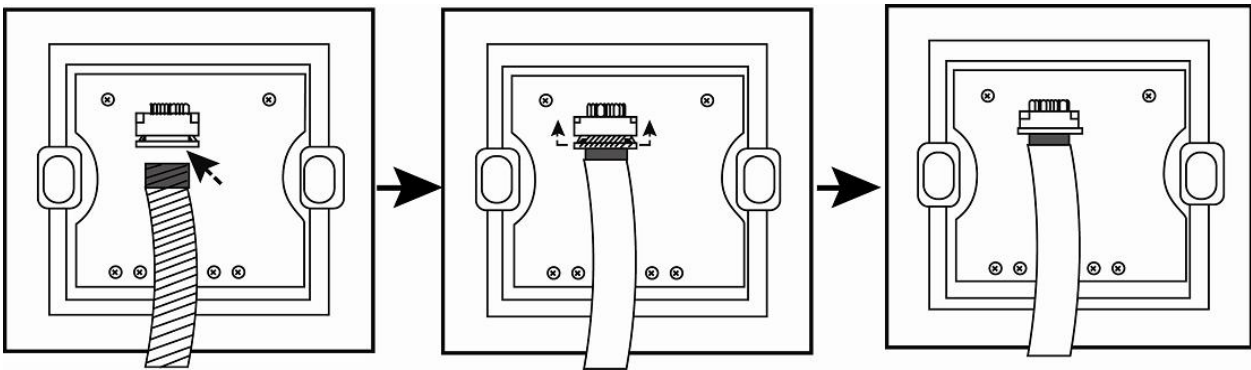


3. To connect the output and power wires to the corresponding input and output terminal blocks on the bottom box.

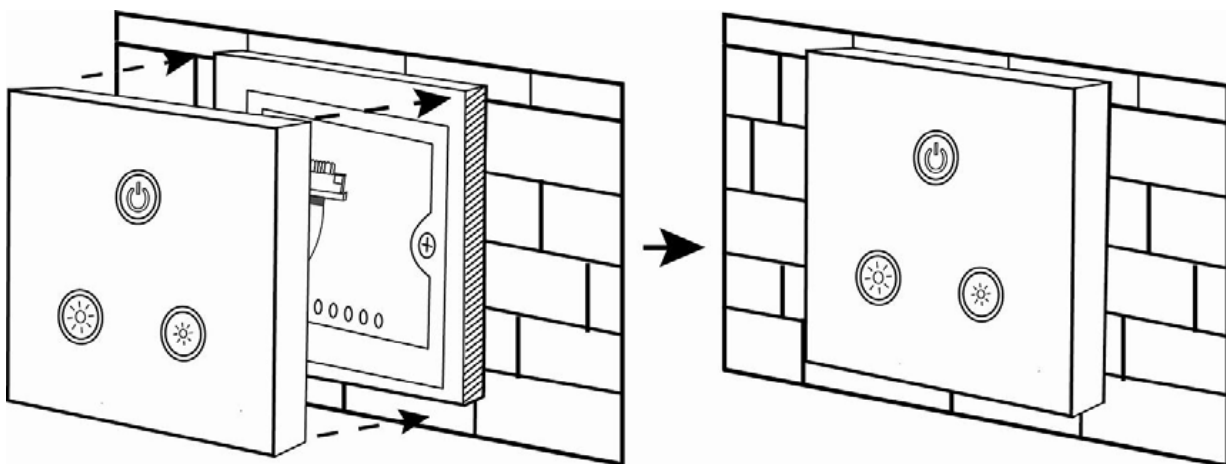
4. To lock the bottom box on the wall and fix it with the screwdriver.



5. To insert the flat wire into the slot No.1 (about 2 mm) with fingers, with the blue side up, then parallel push the card buckle of the slot No.1 back so as to lock the flat wire.



6. To buckle the glass panel to the bottom box.



Remarks:

1. Connect the load wire at first, following by the power wire; **Please ensure short circuit can not occur between connecting wire before you turn on the power.**

2. Power supply voltage range is AC90~265V, more than voltage range maybe will burnout the controller.

产品说明书



产品名称: 多功能触摸式玻璃面板控制器
产品型号: **WallDim200**

- 0-10V 调光模式
- 输入电压: AC90-265V
- 输出电压: DC0-10V
- 输出电流: 50mA

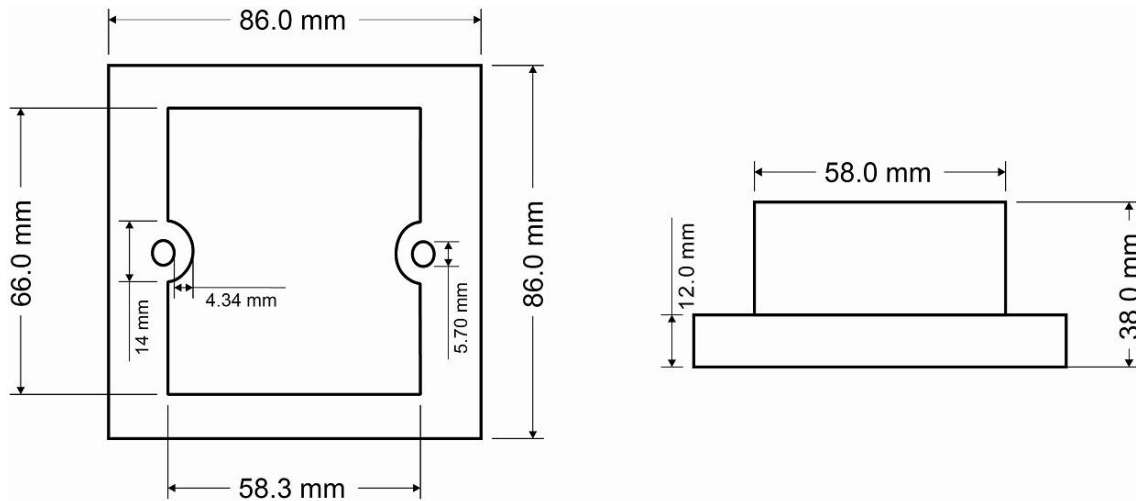
1 概述

WallDim200 是我们设计的高端多功能触摸式玻璃面板控制器 WallDim 系列的产品之一，它具有界面时尚美观，功能齐全，简单易用，按键触摸灵敏等特点。它主要应用于连接 LED 0-10V 调光控制器，可以根据不同的需求实现 0-10V 的平滑调光。

2 技术参数

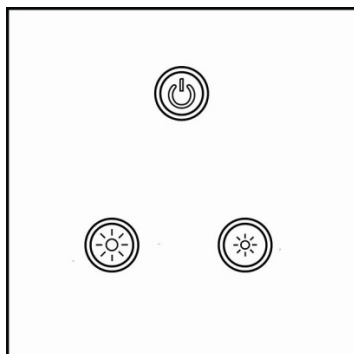
输入电压	AC90 -265V
输出电压	DC0 -10V
输出电流	50mA
空载功率	<1W
输出通道	1 通道
外观尺寸	L86 X W86 X H38 mm
包装尺寸	L117 X W117X H48 mm
工作温度	-20-60 °C
净重	136g
毛重	194g

3 尺寸



4 功能描述

产品外观



短按此按钮打开/关掉控制器



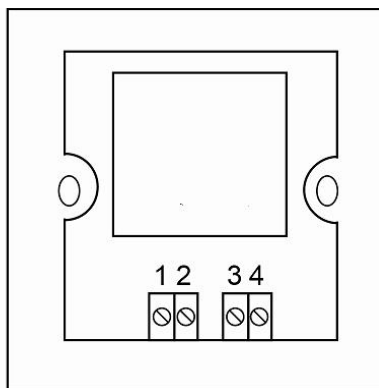
增加调光亮度 每按一次增加一个亮度等级



降低调光亮度 每按一次降低一个亮度等级

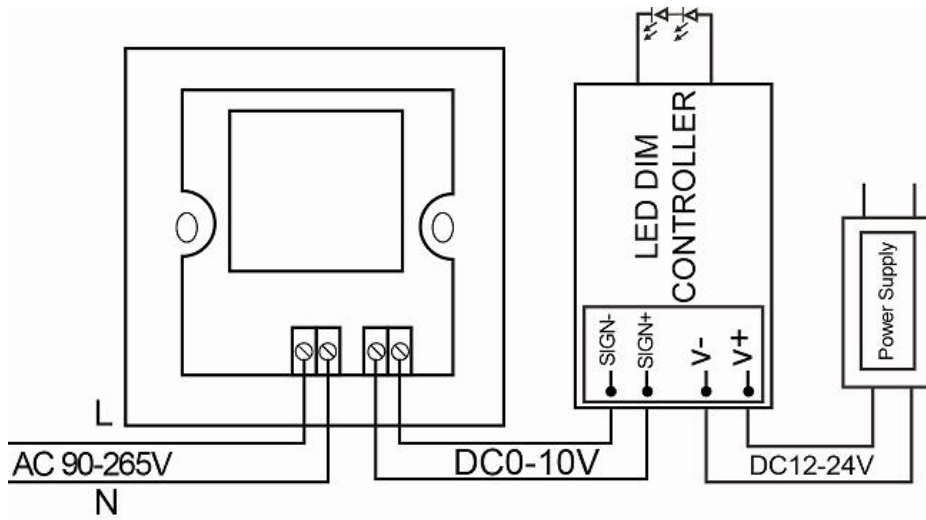
5 接口介绍

1. INPUT: L
2. INPUT: N
3. OUTPUT: 10V
4. OUTPUT: 0V



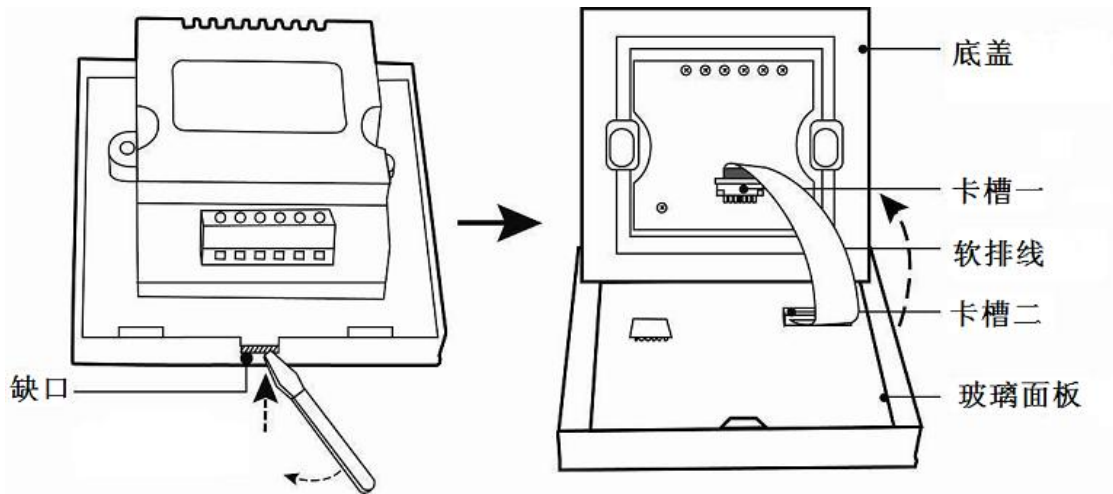
- ◆ 电源输入接口
交流 90-265V 输入，为控制器和控制器所带的灯具供电
- ◆ 单通道输出接口
DC0-10V 输出可以控制 LED 0-10V 调光控制器

6 典型应用

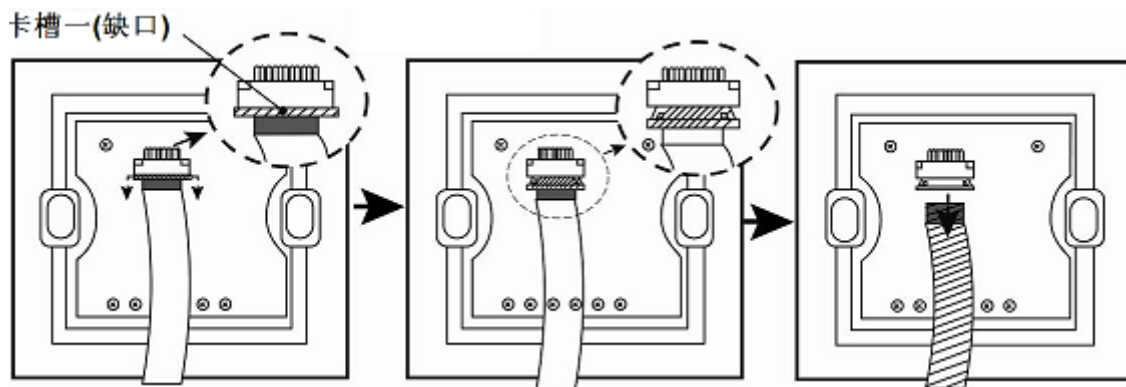


7 安装说明

1. 如图所示用螺丝刀沿着后盖缺口的缝隙轻轻的撬开后盖
注意：玻璃面板和底盖之间连接着软排线，打开面板时请当心

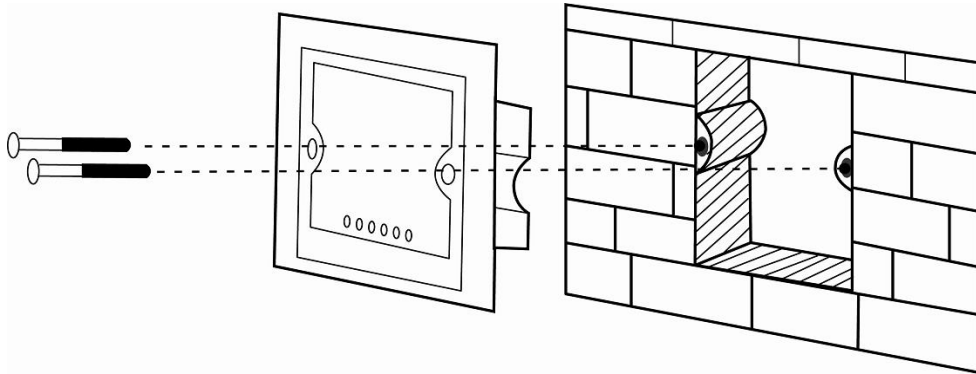


2. 用手指将卡槽一处的卡带轻轻地平行地向外拉出约1.5毫米，直到软排线松掉并且可以从卡槽中拉出

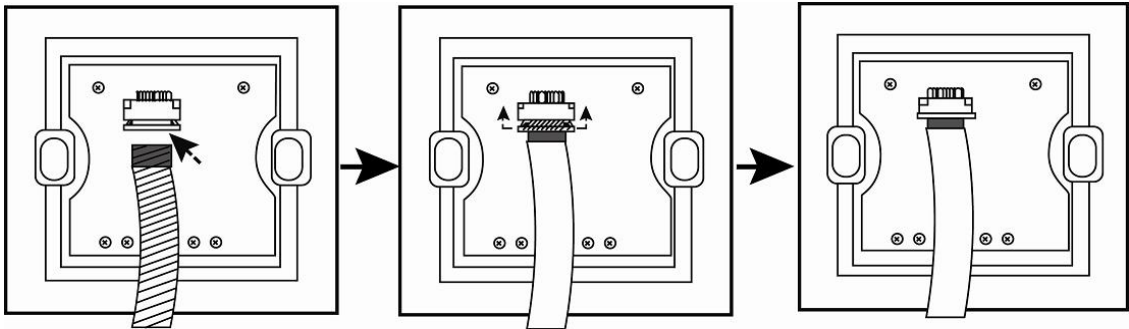


3. 将灯具的输出线和电源线依次连接底盖上相应的输入输出端

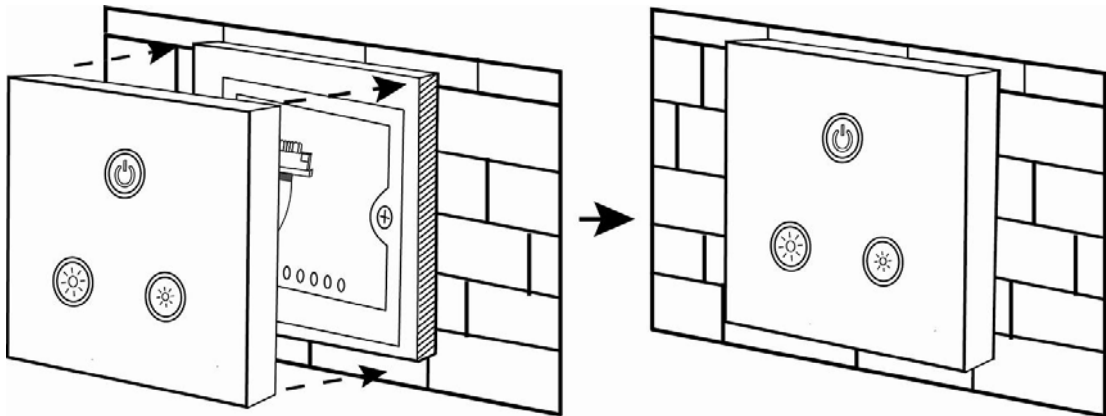
4. 用螺丝将后盖嵌入墙体内，以确保安装牢固



5. 用手指将软排线塞进卡槽一大约2毫米（软排线的蓝色面朝上），然后将卡槽一处的卡带平行地推回以致于能固定住软排线



6. 将玻璃面板卡住底盖



备注:

- 1.先连接灯具线，再连接电源线，请确保在打开电源前连接线之间不会发生短路
- 2.输入电压范围 交流 90-265V，超过这个电压范围可能会烧掉控制器